

STORIES FROM THE FIELD

CRA Charitable Registration N° 800640062 RR001



KUWALA
Christian Girls School



■ ISSUE 05 | SEP | 24_024

GROWING THE CAMPUS STUDENT BODY | 02

NEW TEACHERS AND EMPLOYEES THIS FALL | 04

THE FARM UPDATE | 06

CONSTRUCTION UPDATE + 2025 CAPITAL PROJECT | 12

**GROWING THE
CAMPUS,
BACK TO EXCELLENCE IN
EDUCATION FOR OVER
200 STUDENTS.**



■ *New beginnings to the 2024-2025 academic year. Kuwala_2024.*

But like all good things, summer break eventually ends, and the school year is again upon us. The best way to transition into a back-to-school routine for over 200 students beginning to arrive at the Kuwala campus is to do just that: transition. Routines are the backbone of daily life. They facilitate teaching and learning.

The girls arriving for the new school year are brimming with anticipation. They eagerly shared what they most look forward to, including how they spent their time away from school. All have replied that they had a lovely holiday break; they worked on their studies at home and helped their families with daily chores. They are excited to be back with their friends, and to be at Kuwala allows them to make good friendships and learn different talents.

The Malawi National Examinations Board just announced the results of the 2024 Malawi School Certificate of Education examinations. The representation was a 54.79% pass rate. Kuwala received the summary of their results and a huge congratulations to all for an outstanding 97% pass rate! This high pass rate is a massive testament to the dedication and commitment of Kuwala Christian Girls School, and it wouldn't have been possible without



the support of all our donors and sponsors, a dedicated board in Canada and Malawi, an exceptional administration team and staff, students who work hard and challenge themselves and kilometres and kilometres of villages and communities who see the shining beacon of light that is Kuwala. It is the result and the reason we continue to provide an outstanding education to girls in various poverty levels, to give a hand up and the opportunity to the girl child with no other option.

WELCOME

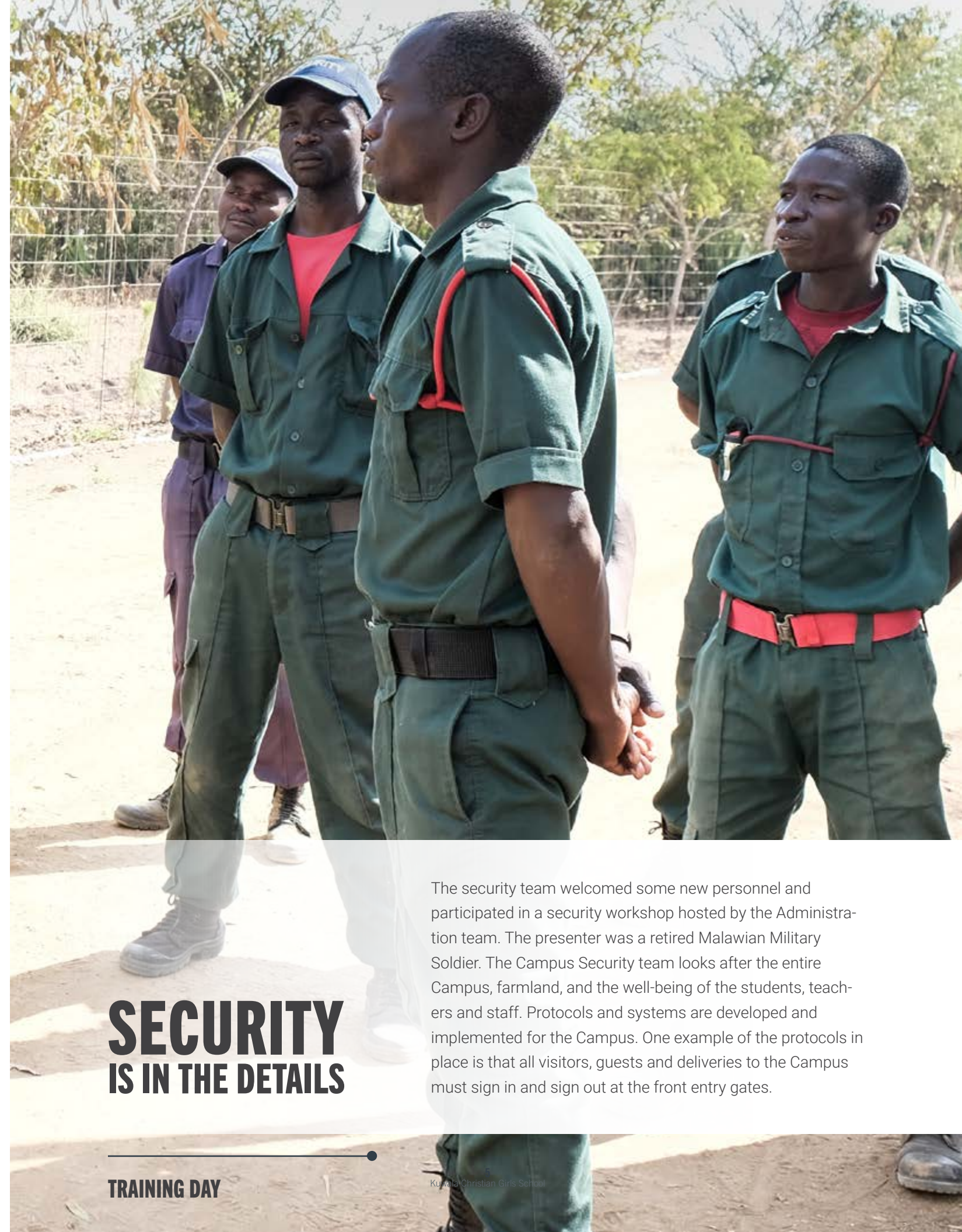
KUWALA ON-BOARDS NEW EMPLOYEES AND PROVIDES MUCH NEEDED EMPLOYMENT.

Kuwala begins a new school year with a dedicated staff! Nine teachers with the assistance of 3 supporting former students. One assists at each hostel, library, and computer and science laboratory. Two full-time cooks under the supervision of our Head Chef Philius, thirteen security guards, and two store clerks for receiving and tracking all the supplies that come and go from Kuwala. The Farm and Gardens employs six staff members, including the farm manager, Rachel. Six additional staff members round out the maize mill, biogas, on-site plumber, nurse, and campus photographer. Kuwala is committed to providing a robust working environment that benefits the school and the surrounding communities.

GROWING EMPLOYMENT

- 09 - Teachers
- 03 - Support assistants
- 02 - Full time cooks
- 13 - Security guards
- 02 - Store clerks
- 06 - Farm employees
- 06 - Operational staff

We're not just providing high school education to girls who might otherwise miss out—we're also creating local job opportunities, supporting families, and strengthening our community.



SECURITY IS IN THE DETAILS

The security team welcomed some new personnel and participated in a security workshop hosted by the Administration team. The presenter was a retired Malawian Military Soldier. The Campus Security team looks after the entire Campus, farmland, and the well-being of the students, teachers and staff. Protocols and systems are developed and implemented for the Campus. One example of the protocols in place is that all visitors, guests and deliveries to the Campus must sign in and sign out at the front entry gates.

TRAINING DAY

THE FARM

WORKING TO IMPROVE OUR SOIL THROUGH COMPOSTING AND WORKING TOGETHER IN CANADA TO MAKE IT HAPPEN



■ To improve our soil we need to create more compost. Local villagers are providing the labour to get it done. Kuwala_2024.

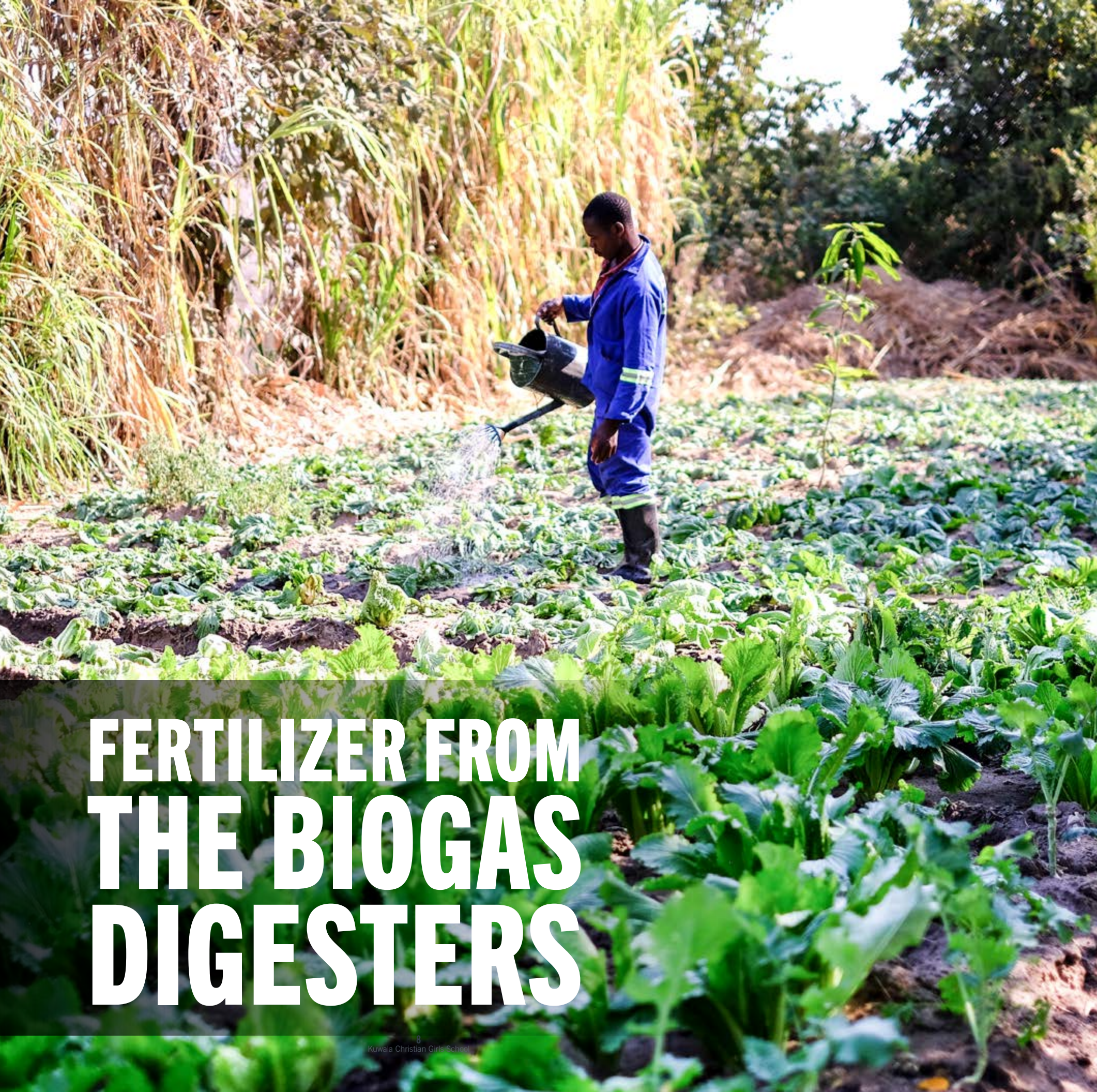
From the Campus to the Farm, Kuwala is growing and expanding. The newest addition to the farming program is composting! While on the service trip in June, two delegates introduced composting to Kuwala. Rachel, the Farm Manager, spent a few days learning and developing the procedures with the team, then further implementing the techniques to begin a robust composting program to help reduce the need for costly fertilizer and intensely nourish the soil. Rachel and our Canadian donor devised a plan after the testing of the soil samples.

The compost requires three necessary ingredients: Browns, Greens, and Water. Kuwala can acquire green material from locals who harvest tree leaves and grasses; brown material is any dead plant matter, and the soil is mixed. The Biogas effluent is used as a natural fertilizer as it contains many nutrients and is PH neutral. This effluent can be

mixed into the compost or diluted with water and applied directly to the plants. The growth results of the gardens already using the biogas effluent are remarkable! Kuwala also purchases chicken manure from the local villages to mix with the soil for even more nutrients added naturally to the soil.

The cost of fertilizer has skyrocketed, making it increasingly expensive to grow crops. However, Kuwala is committed to finding sustainable solutions. By creating compost and rehabilitating the soil, Kuwala will reduce costs and produce better yields for crops. With the completion of the newest water tower, the growing season will continue throughout the year and not depend solely on the rainy season. The team members in Canada consult with the farm manager regularly to ensure that the process is developing and the results are positive.

The Farm now has a probe tester for sampling inside the compost piles and a heat gun for testing the temperature of the piles so the local workers know when to turn the piles. Kuwala provides these jobs to the local villagers, creating and maintaining the compost piles and teaching them the practices that may, in turn, help them implement for their crops, therefore changing many communities for the better. Once the harvest begins, the next step is to harvest some of the seeds from the crops grown so that Kuwala can sustainably grow these crops without needing to purchase as many seeds each season. The next step will be to preserve techniques to optimize the abundance of harvest.



FERTILIZER FROM THE BIOGAS DIGESTERS

BIO-FERTILIZER BENEFITS

- 01** | **Closed-Loop Sustainability:** The biogas digesters at Kuwala not only provides clean energy for cooking but also produces bio-fertilizer as a byproduct. This bio-fertilizer enriches the soil in the school's organic garden, reducing waste and creating a circular system.
- 02** | **Nutrient-Rich Harvests:** Vegetables grown using bio-fertilizer are packed with nutrients, thanks to the natural balance of nitrogen, phosphorus, and potassium that biogas digesters produce. This makes the produce healthier and supports better nutrition for the students.
- 03** | **Empowering Environmental Education:** Kuwala's garden project serves as a practical classroom, teaching students about sustainable agriculture, renewable energy, and environmental conservation. These lessons extend beyond the garden, empowering girls to become leaders in eco-friendly practices.
- 04** | **Fighting Food Insecurity:** By growing their own vegetables, Kuwala is creating food security and fostering self-reliance. The bio-fertilizer enhances crop yields, meaning the school can produce more food year-round, which directly supports the students' health and well-being.
- 05** | **Climate Change Mitigation:** Using bio-fertilizer not only reduces the need for chemical fertilizers, which can harm the environment, but also helps capture methane, a potent greenhouse gas. The biogas digesters at Kuwala turn what would be a pollutant into a resource, contributing to climate change mitigation.
- 06** | **Community Benefits:** The success of Kuwala's organic garden serves as a model for the local community, demonstrating how sustainable practices like bio-fertilization can improve food production, support nutrition, and foster a greener environment. This inspires other families and schools to adopt similar methods.

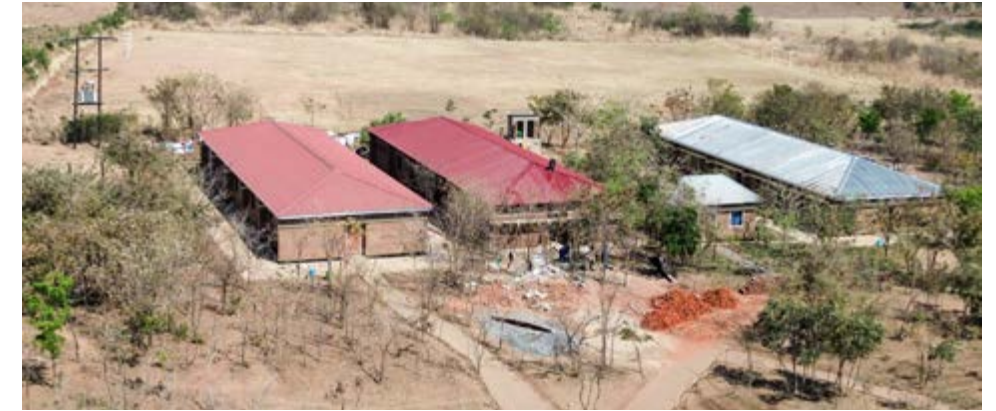


FROM THE FARM

Cassava, is a starchy root crop widely grown and consumed in Malawi and across Africa. It is a vital staple food, providing a major source of carbohydrates for many communities. Drought-resistant and adaptable to varying soil conditions, cassava thrives even in challenging environments, making it an important crop for food security.

■ Kuwala has harvested some of its Cassava from the farm and is being sold to the builders working on the third hostel. Kuwala_2024.

CONSTRUCTION ON CAMPUS



■ Last building on the right is the third student hostel. Kuwala_2024.



■ The walls and the roof trusses going up on the third hostel.. Kuwala_2024.

A ROOF OVER ONE'S HEAD AND A BED TO SLEEP ON.

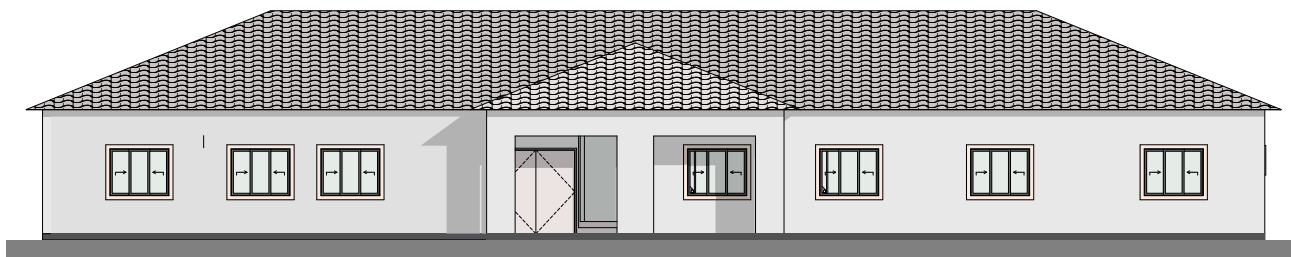
The third hostel is almost complete and will be a welcome addition to the Campus. Part of the orientation for new students includes receiving their new uniforms and being assigned to a room with a bunk bed and mattress with mosquito nets surrounding their beds to prevent the malaria-carrying mosquitoes from getting to them. Many girls come from villages, living in huts with thatched roofs and sleeping on the dirt floor.

The workshop and the new power tools continue to produce quality items for the Campus. Local workers built the desks and bunk beds for the hostel in record time with the latest tools distributed by a Canadian donor. The workshop will evolve to provide learning opportunities for students in trade.

AS SEEN IN OUR RECENT AGM MEETING
HELD IN WINIPEG.

OUR NEW 2025 CAPITAL PROJECT DRIVE

AS THE CAMPUS GROWS WE NEED
A CAMPUS COMPLEX ADMIN
BUILDING TO SUPPORT TEACHERS
AND STUDENTS ALIKE.



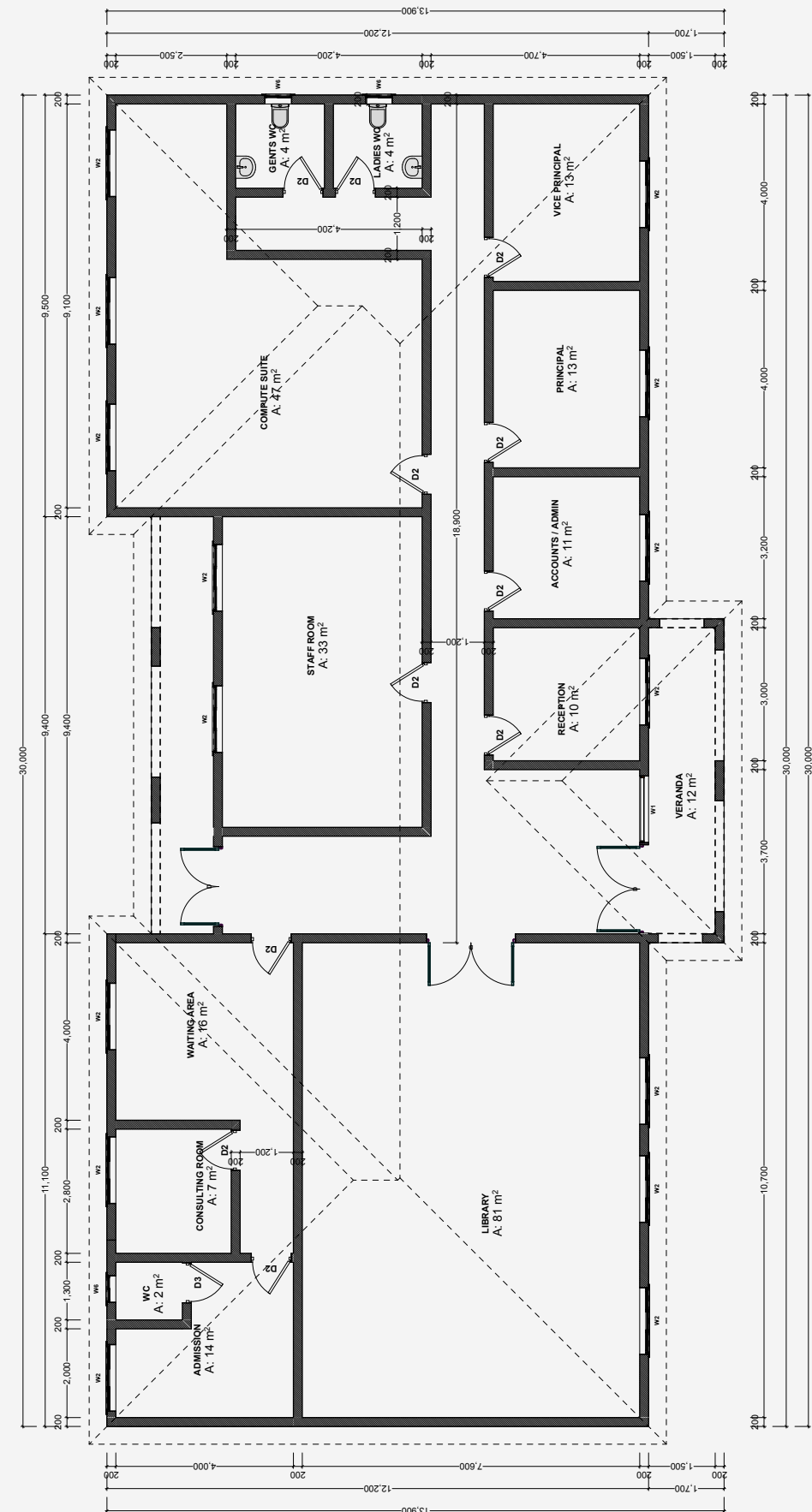
■ Front elevation. Kuwala_2024.

AGM REPORT

To learn more about this initiative and our future plans, please download our latest Annual General Report from September's 2024 meeting held in Winnipeg.

As our Campus continues to grow, we're planning to build a Campus Complex building to house: a sewing and tailoring centre, new computer science lab, library, medical clinic, staff development space, admin and accounting offices.

To make this vision a reality, we're seeking to raise \$170,000 CAD to fund the project.



ARE YOU A MEMBER OF A SPORTS TEAM OR A CHURCH YOUTH GROUP?



Are you planning a golf tournament, or are you a Church congregation looking for an International Mission? Please consider Kuwala if you are planning an event. Becoming a partner in fundraising to support an all girl's school in Africa makes a measurable difference in the students' lives when there is no other option for education. We would be happy to have a discussion. Check out our website at Kuwala.org or connect with us at info@kuwala.org

KUWALA CHRISTIAN GIRLS SCHOOL

PO Box 23070
McGillivray PO
Winnipeg, Manitoba R3T 5S3

CRA Charitable Registration N° 800640062 RR001